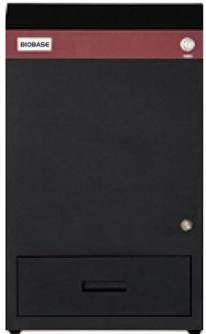


Automatic Gel Imaging and Analysis System

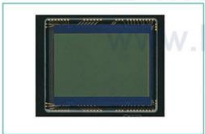
Introduction:

Automatic Gel Imaging and Analysis System is a highly integrated and fully automated gel imaging system, system interface is simple and practical, the main interface has shooting button and time control to guide the user, it is very easy to operate, no need to have manual and tedious debug, it is your best choice.



Features:

High-resolution CMOS camera, high sensitivity, high resolution, with automatic focus and high performance 6 times lens, specialized filter for nucleic acid dye.



CMOS Camera



Autofocus Lens



Multilayer Coating Filter

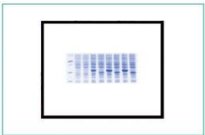
Specialized overlay glue cutting filter, compared with the traditional one, it has many advantages, easy to operate, can prevent UV and blue light damage, no need to operate in dark room, work very well under strong light condition. The white light sample plate is used for SDS-PAGE glue samples shooting.



UV sample plate



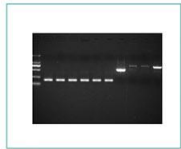
Glue Cutting Filter



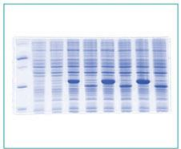
White Sample Plate

Application:

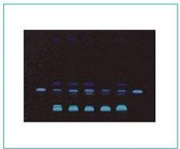
It can be used to do nucleic acid test for various fluorescent dyes, such as EB, SYBRGold, SYBR Green, SYBR Safe, Gel Red Gel GreenTexas, Red, Fluorescein marked DNA/RNA.



DNA Gel Imaging



SDS-PAGE Imaging



Thin-layer Chromatography



Colony Counting

Technical Parameters:

Mode	BK-AG100
Pixel	2592*1944(5.03MP)
Exposure Time	1ms-3000ms
QE Value	High QE: >65%
Binning	1*1
Bit Depth	16 bit (0 - 65535)
OD	≥4.8 OD
Lens	Motorized 8-48 mm, F1.2
Trans-UV	302nm
Epi-White	LED
Trans-White	UV to white sample plate
Epi-UV	254nm、302nm、365nm
Filters	590nm、Others for option
UV Area	21*21cm
Timing Off	1~60 mins
Power Supply	100-240V, 50/60Hz
Packing Size	460*475*725mm
Gross Weight	31kg